

RADIATOR KEY WRENCH Réf.: 9027010001

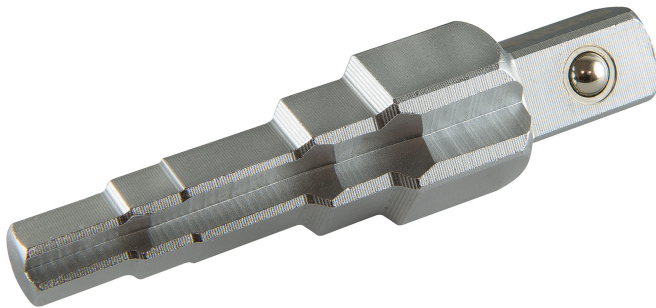
Caracteristics

APPLICATION



- For fitting the captive nut fittings that link the radiator to its control valve.
- Use with the 9027720001 ratchet or any other 1/2" female ratchet conforming to NF ISO 1174.

FEATURES

- Wrench with 4 sizes diam. 3/8 - 1/2 - 3/4 - 1".
- Short wrench for working in confined spaces on lug nuts and internal hex nuts.



Product data

 g	Garantie (nb d'année) / G	Ref.		Code EAN
130	G2	9027010001	1	3303800010284



NOVALIA SAS 2 rue de Bergognon 42500 LE CHAMBON F.
FRANCE - www.novalia.pro
PEDDINGHAUS Handwerkzeuge In der Graslake 35
58332 Schwelm DEUTSCHLAND - www.peddinghaus.de
NOVALIA SA Str. Narciselor nr.50 500251 - Braşov ROMÂNIA
www.mob-ius.ro
NOVALIA ESPAÑA Portuetxe 51, of.204 20018 San Sebastián